

4D3N CITY OF JAKARTA

DAY 01 ARRIVE JAKARTA (L/D)

Tour Code: 4BJST /PANCA

Meeting service upon arrival at Soekarno Hatta International airport, then direct transfer to hotel for check in, dinner at local restaurant

DAY 02 JAKARTA FULLDAY TOUR (B/L/D)

Breakfast at hotel, today Jakarta full day tour will visit TAMAN MINI INDONESIA INDAH, Taman Budaya Tionghoa (Chinese Cultural Park), Jakarta City Tour passing sight to NATIONAL MONUMENT, ISTIQLAL MOSQUE, OLD BATAVIA, SUNDA KELAPA HARBOUR and ANCOL ART MARKET, lunch and dinner will provided at local restaurant

DAY 03 JAKARTA (B/L/D)

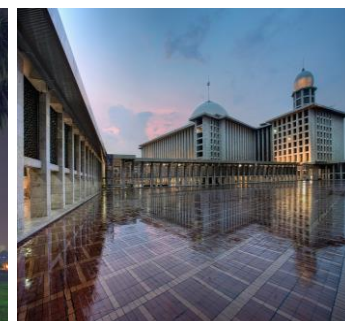
Breakfast at hotel. Shopping program will visit THAMRIN CITY MALL, Grand Indonesia Shopping Mall, ITC MANGGA DUA and SARINAH DEPT STORE, after shopping transfer back to hotel.

DAY 04 JAKARTA – DEPARTURE (B)

Breakfast at hotel. Free program until transfer to airport.

Travel Period:

- 01 Oct 2017 – Feb 2018



INCLUDE:

- 3 night stay at hotel
- Meals as per itinerary, Transport with AC
- English / Malay speaking tour guide
- Entrance fees , parking , and toll road fees
- Drinking water at car/coach during tour programs

EXCLUDE:

- Return Flight ticket (KUL/CGK/KUL)
- Compulsory Tipping: RM40/per person
- Travel Insurance: RM 35/person
- Surcharge hotel or high season period
- Personal expenses such as mini bar, telephone etc

TERMS & CONDITIONS:

MODE OF PAYMENT:

- Booking fee for package RM50 /person.
- Second payment – 50% from total package must settled 12 days after booking.
- Balance payment must be settled 01 month before departure.

ACCOUNT DETAILS:

- Account Name: KPH Travel Sdn Bhd
- Bank Name : Maybank
- Account No. : 5628 3461 1668

REMARKS:

- The above rates require a minimum of 02 persons per booking and ONLY applicable for Malaysian.
- All rates may be subject to change without prior notice.
- Itinerary are subject to change without prior notice depending on weather condition
- High season surcharge to be advise.
- By booking with KPH Travel Sdn Bhd, you are fully accepted all the terms and conditions.

CANCELLATION POLICY (FEE):

- | | |
|--------------------------------------|--|
| • 46 days or more | Deposit |
| • 35- 45 days | 25% of tour fare or Deposit, whichever is higher |
| • 26-34 days | 50% of tour fare or Deposit, whichever is higher |
| • 20-25 days | 75% of tour fare or Deposit, whichever is higher |
| • Less than 20 days before departure | 100% of tour fare |

RATE PER PERSON (RM)

CAT	HOTEL	RATE PER PERSON (RM)				
		2-3 Adt	4-6 Adt	7-10 Adt	11-14 Adt	Sgl. Supp
2*	IBIS BUDGET TANAH ABANG/ ZIA SHIRO ISIKA/ or Similar	929	799	649	629	209
3*	FAVE ZAINUL/D'HOTEL/CITY M/ 88 GROGOL or Similar	979	849	699	679	259
3*	IBIS MANGGA DUA/GRAND CORDELLA SENEN/or Similar	999	869	719	699	279
3*	ALL SEASON GAJAH MUDA/ NEO MANGGA DUA/ or Similar	1029	899	749	729	309
4*	SANTIKA PREMIER/IBIS STYLE MANGGA DUA/or Similar	1,129	999	849	829	399
4*	ASHLEY WAHID HASHIM / MILLENIUM/ or Similar	1,219	1,089	939	919	489



03 89280457



travel@kliacs.com.my



012-6509783



KLIA Travel- kliatravel.com

D-3A-1, Bangi Gateway Shopping Complex, Persiaran Pekeliling, Seksyen 15,

43650, Bandar Baru Bangi, Selangor. (KPL No. 6415)